

NBSRT Organizational Charts

Chart 1 – [Governing Groups](#)

Chart 2 - [Executive Officers](#)

Chart 3 – [Board of Directors - Members](#)

Chart 4 – [Board of Directors - Votes](#)

Chart 5 – [External Committees](#)

Chart 6 – [Affiliate Organizations](#)

Chart 7 – [NBTF Group Insurance](#)



Chart 1:
Governing Groups

Branch Membership

10 Local Branches

Membership Elects/Appoints Provincial Directors

Membership Elects Provincial Executive

Membership Attends/Votes At Provincial AGM

Annual General Meeting

Meets In The Spring

Provincial Executive Elected Every Second Year

All NBSRT Members-In-Good-Standing May Vote

Board of Directors

Meets In The Fall & At The Direction Of The President

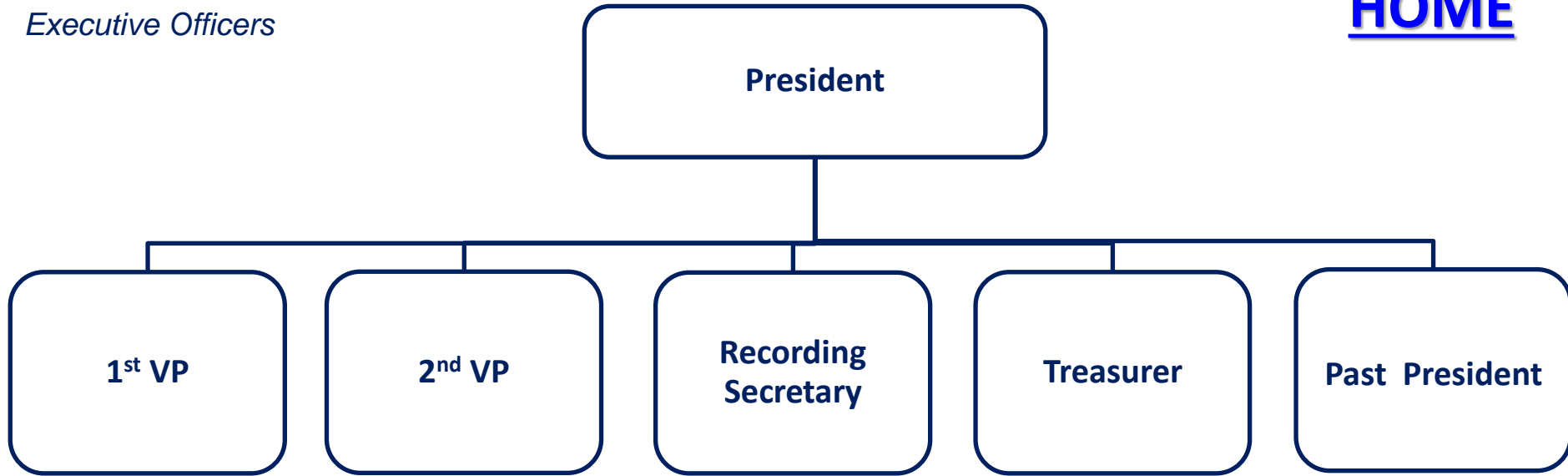
Provincial Executive, Provincial Directors, Chairs of Committees, Appointees, & Representatives May Vote

NBSRT Executive

Meets At The Direction Of The President
Carries On The Business Of The NBSRT Between Meetings Of The Board Of Directors & The AGM



Chart 2:
Executive Officers



Note:

- a) The President normally serves for one two-year term; however, he/she may be elected to one additional two-year term.
- b) The Past President's term ends when the President leaves office.
- c) Executive Officers, other than the President and Past President have no restrictions on the number of consecutive terms they may serve.



Provincial Directors

From 10 Local Branches

Bathurst (2 Directors)

Carleton/North York (2 Directors)

Central (2 Directors)

Charlotte (2 Directors)

Kings (2 Directors)

Miramichi (2 Directors)

Moncton (2 Directors)

Restigouche (2 Directors)

Saint John (2 Directors)

Victoria/Tobique (1 Director)

Branches With More Than 100 Members Are Entitled To Elect/Appoint
Two (2) Provincial Directors To Meetings Of The Fall Board of Directors

Provincial Committee Chairpersons

Six Standing Committees

Group Insurance Chair

Membership Chair

Online Media Chair

Pension Chair

Scholarship Chair

Wellness Chair

Provincial Appointees / Representatives

Three Appointees / One Representative

Membership Secretary (Appointee)

Reflections Editor (Appointee)

Reflections Distribution Manager (Appointee)

School Days Museum Inc (Representative)



Chart 4:
BoD Votes

<i>Membership Chair</i> <i>(1 Vote)</i>	<i>Bathurst Directors</i> <i>(2 Votes)</i>	<i>Online Media Chair</i> <i>(1 Vote)</i>	<i>Carleton/North York Directors</i> <i>(2 Votes)</i>	<i>Pension Chair</i> <i>(1 Vote)</i>	<i>Central Directors</i> <i>(2 Votes)</i>	<i>Group Insurance Chair</i> <i>(1 Vote)</i>	<i>Charlotte Directors</i> <i>(2 Votes)</i>	<i>Wellness Chair</i> <i>(1 Vote)</i>	<i>Kings Directors</i> <i>(2 Votes)</i>	<u>Executive</u> President 1 st VP 2 nd VP Secretary Treasurer Past President (6 Votes)
<i>Board of Directors Table</i>										
<i>Scholarship Chair</i> <i>(1 Vote)</i>	<i>Miramichi Directors</i> <i>(2 Votes)</i>	<i>School Days Museum Rep</i> <i>(1 Vote)</i>	<i>Moncton Directors</i> <i>(2 Votes)</i>	<i>Reflections Editor Appointee</i> <i>(1 Vote)</i>	<i>Restigouche Directors</i> <i>(2 Votes)</i>	<i>Reflections Distribution Appointee</i> <i>(1 Vote)</i>	<i>Saint John Directors</i> <i>(2 Votes)</i>	<i>Membership Secretary Appointee</i> <i>(1 Vote)</i>	<i>Victoria/Tobique Director</i> <i>(1 Vote)</i>	

Note: A total of 35 Votes at the Board of Directors Table is broken down as follows:

- a) Directors – 19 Votes
- b) Chairs of Committees – 6 Votes
- c) Appointees – 3 Votes
- d) Representatives – 1 Vote
- e) Executive Officers – 6 Votes



Chart 5:
External Committees

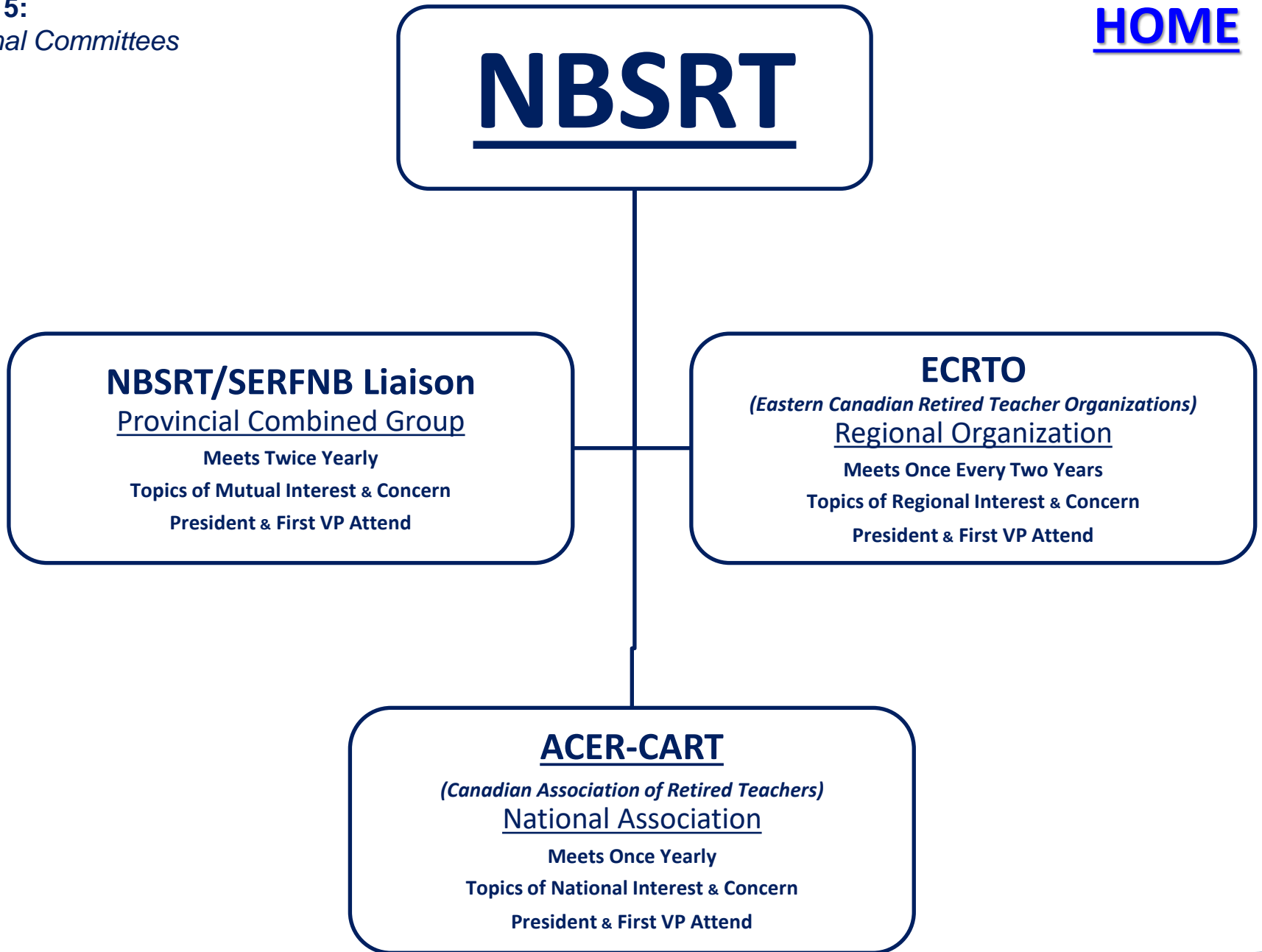


Chart 6:
Affiliate Organizations

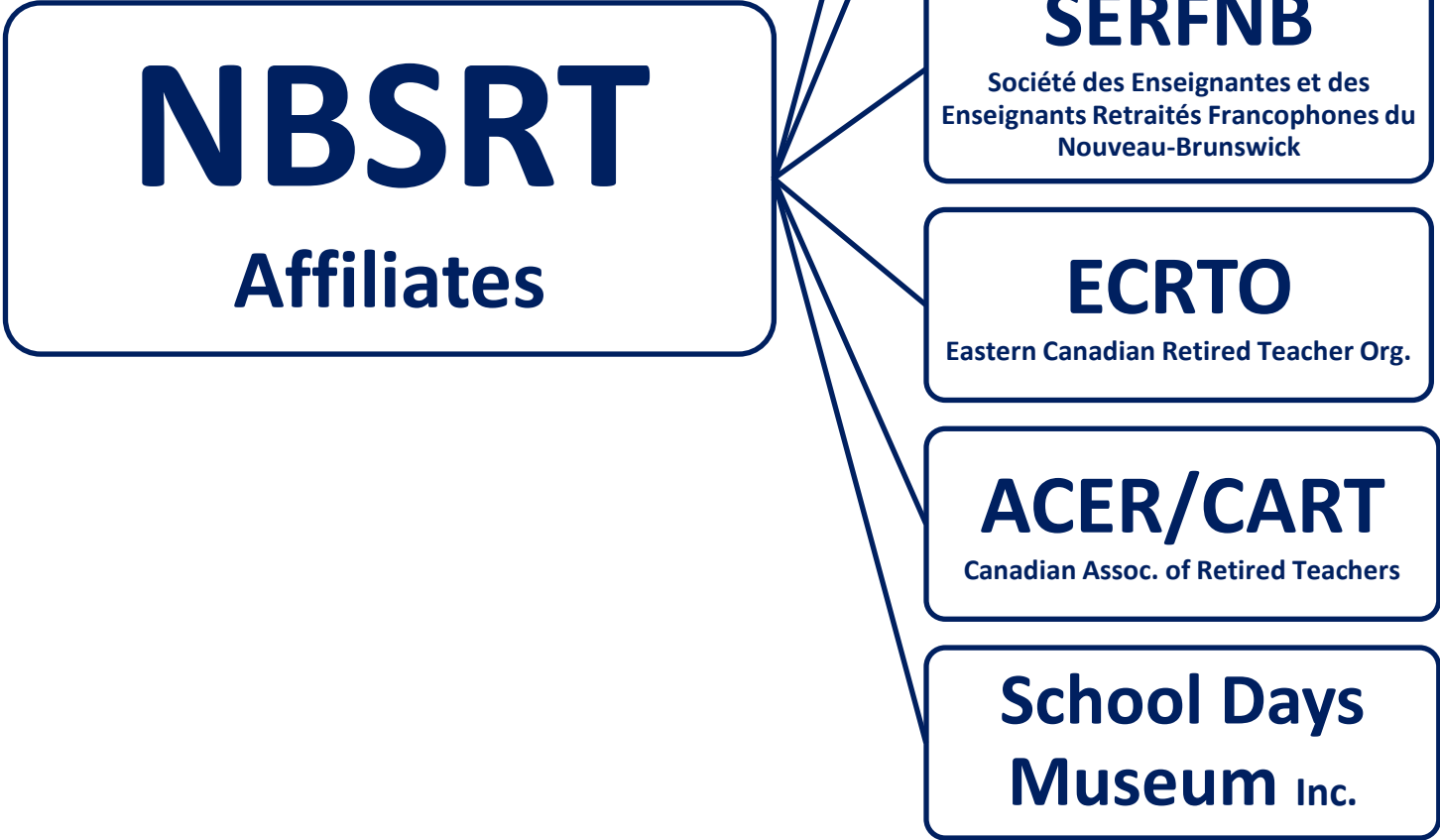


Chart 7:
NBTF Grp Ins

[HOME](#)

NBTF GROUP INSURANCE TRUSTEES

“Plan Policyholder”

Includes one retired Anglophone teacher & one retired Francophone teacher, who may or may not be members of NBSRT/SERFNB.

JOHNSON INSURANCE

Insurance Products & Benefits Provider

“Plan Consultants & Administrators”

Johnson Insurance Representative To NBSRT/SERFNB

Dale Weldon - Senior Consultant

NBSRT

General Plan Queries/Requests To Trustees

SERFNB

General Plan Queries/Requests To Trustees

Liaison Group Shares

Concerns Twice Yearly

NBSRT Group Insurance Committee

Makes Plan Recommendations
To NBSRT Executive

Note: NBTF Group Insurance Trustees meet four times per year to manage the Trust Deed and to examine the best group insurance options for all NB active and retired teachers.

There are 10 voting members: 5 NBTA, 3 AEFNB, 2 Retirees – plus two non-voting members: the NBTF Exec Dir & a representative from the Government.



NBSRT Organizational Charts

Revised June 2020



The image shows a menu for NBSRT Organizational Charts. On the left is a blue vertical bar with a circular logo containing a map of North Carolina, the year 1975, and the text 'NBSRT'. To the right of the bar, the title 'NBSRT Organizational Charts' is followed by a list of seven items, each with a blue underlined link:

- Chart 1 – [Governing Groups](#)
- Chart 2 - [Executive Officers](#)
- Chart 3 – [Board of Directors - Members](#)
- Chart 4 – [Board of Directors - Votes](#)
- Chart 5 – [External Committees](#)
- Chart 6 – [Affiliate Organizations](#)
- Chart 7 – [NBTf Group Insurance](#)

[Back to the Beginning](#)

